



CZ Engineering, Inc.

"Craftsmanship and Innovation"

8 Things You Should Know About CZ Pole Trailers

#1

Our **massive telescopic tongue** is made of 8" x 8" x 1/4" sq. tube inside of a 10" x 10" x 1/4" sq. tube. It is more than 3 times stronger than the 5" and 6" tube your spec calls for.

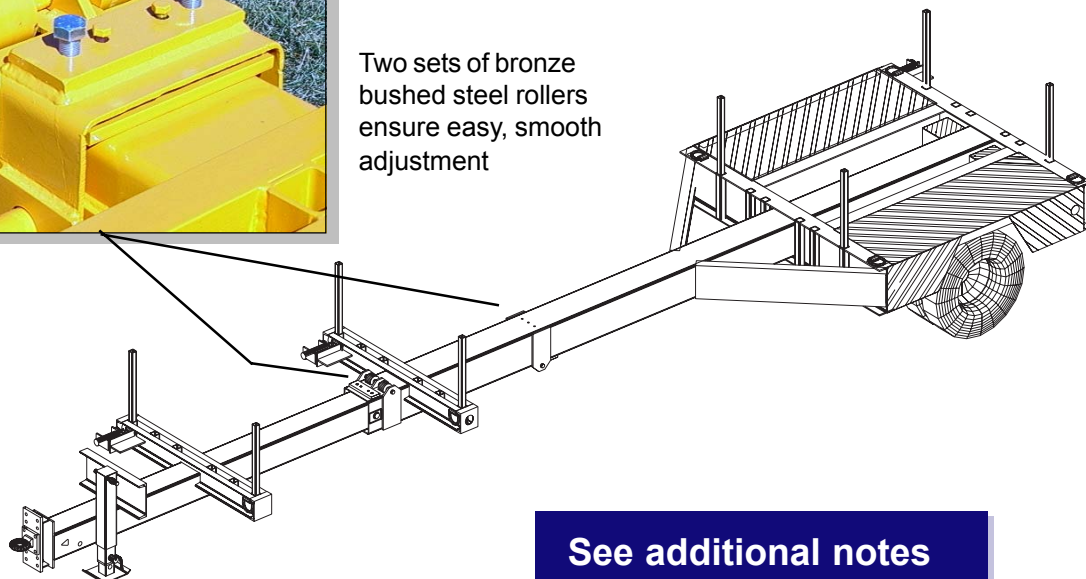
This strength is paramount in meeting one of our primary design objectives: Proper weight distribution for safe, sway-free towing. A minimum of 12 to 15% of any trailer's gross weight should be carried on the hitch in order to maintain proper towing characteristics. Our massive tongue provides the backbone to do just that without relying on the poles as structural elements.

Not only are the large 8" and 10" tubes *less likely* to get bent, our system also provides some "room for error" in the event they do get a little bent. Most pole trailers have relatively tight fitting tubes (your specs call for only a 1/8" gap between the tubes). If the tongue is bent even a little bit, it can become impossible to telescope it any longer.

Because our design results in a 3/4" air gap between the inner and outer tubes, the tongue will remain easy to telescope even if it does get bent.



Two sets of bronze bushed steel rollers ensure easy, smooth adjustment



See additional notes about the adjustment system on page 5.



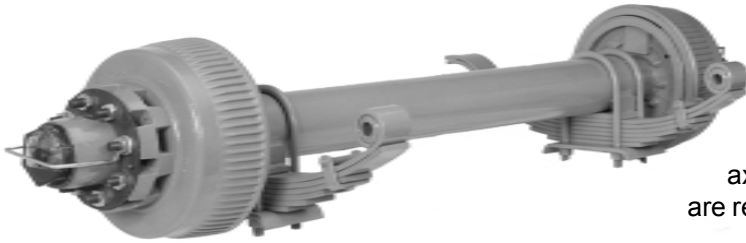
CZ Engineering, Inc.

"Craftsmanship and Innovation"

#2

The **tires** used on our pole trailers are sized appropriately for the weight and task at hand. They use industry standard lug patterns and wheels - parts are readily available all over the country.

The **CZ12KP** is available with either 16.5" or 16" tires and wheels. The **CZ15KP** comes with 17.5" tires and wheels.



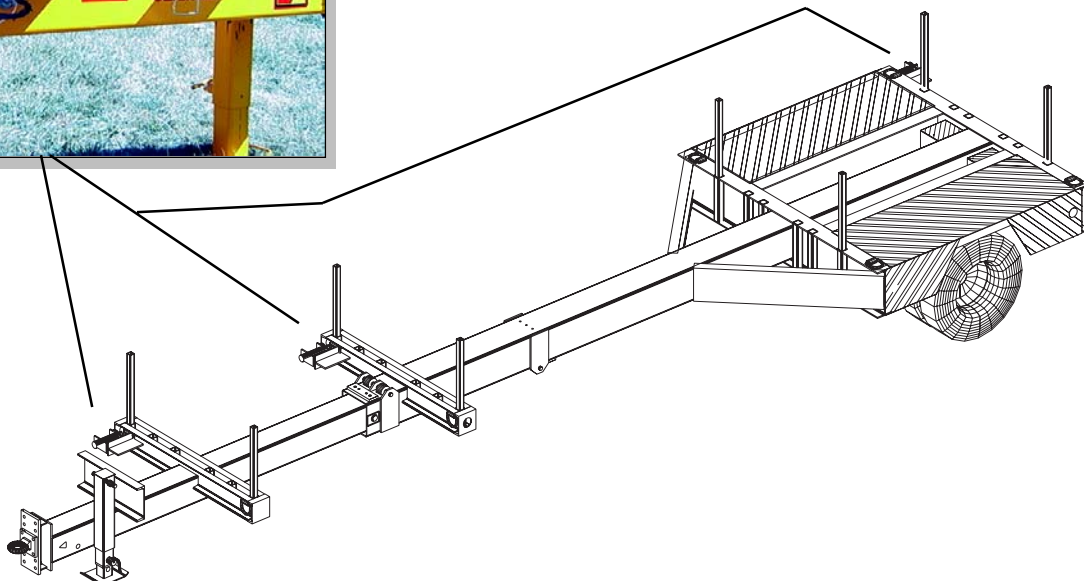
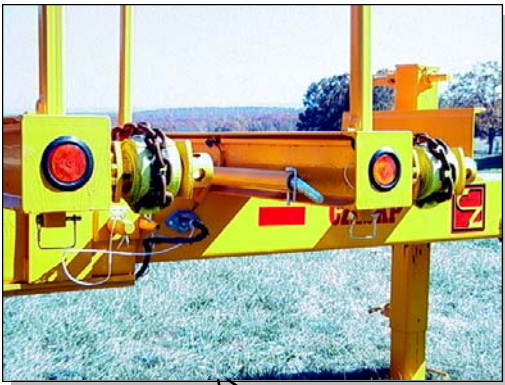
We use Dexter **axles** - the hands-down leader in the medium axle industry. Parts for Dexter axles are readily available all over the country.

#3

We normally mount three **winches** when winches are requested. One mounts on the right rear of the platform and the other two are on each of the bolsters. The winches are standard for the trucking industry. A tightening bar is mounted in a holder behind the front bolster.

The 3" wide nylon straps have about a foot of chain on the end where the most wear occurs. D-rings are provided on the side opposite the winches; the chain ends are hooked there.

(Note: Additional winches can be added.)





CZ Engineering, Inc.

"Craftsmanship and Innovation"

#4

Capacity: The CZ12KP is built to carry a LOT of pole at a time - and do so safely. The 15,800 G.V.W.R. combined with the industry's strongest tongue allows you to make the most use of your line truck's abilities. (e.g. You can transfer 3000 to 4000 lbs to the truck through the trailer hitch.) The CZ15KP will give you even more capacity with it's 18,800 lb G.V.W.R.

#5

Width: Our trailer is narrower than most pole trailers. Since its overall width is only 78 inches, it is more maneuverable and safer than other pole trailers. This will not only enhance your driver's ability to operate in rough mountainous line construction conditions, but it will also help them to stay out of the way of other drivers while in traffic.

#6

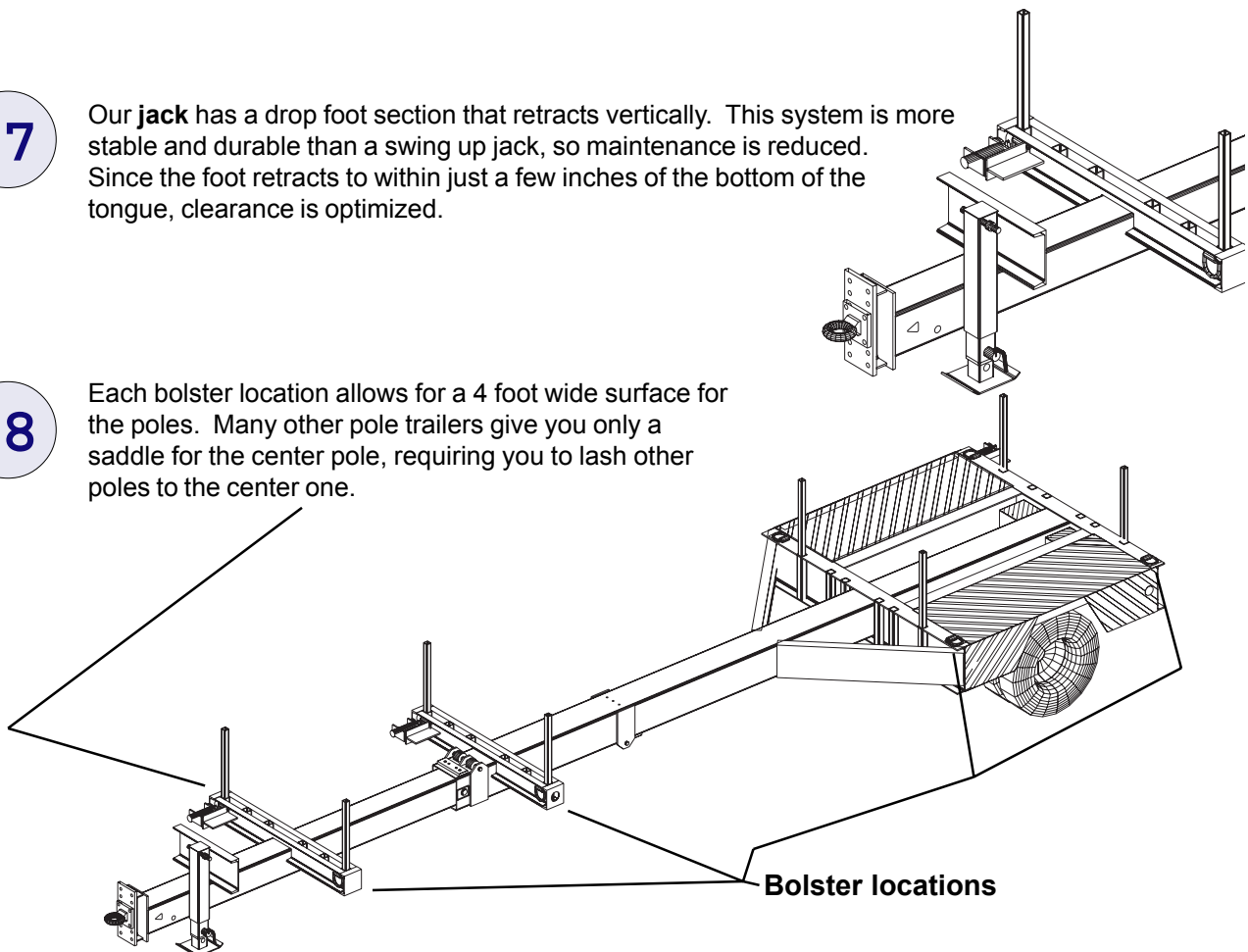
The **deck** functions as fenders as well as a utility platform. The small storage area in the center has a mesh bottom. The entire width is suitable for carrying various items, but poles are restricted to the center 4 feet. This enhances stability, maneuverability, and safety. Additional storage space is available with our optional V-extension storage area (see brochure).

#7

Our **jack** has a drop foot section that retracts vertically. This system is more stable and durable than a swing up jack, so maintenance is reduced. Since the foot retracts to within just a few inches of the bottom of the tongue, clearance is optimized.

#8

Each bolster location allows for a 4 foot wide surface for the poles. Many other pole trailers give you only a saddle for the center pole, requiring you to lash other poles to the center one.





CZ Engineering, Inc.

"Craftsmanship and Innovation"

Adjusting the length of a CZ Pole Trailer

The length of a CZ Pole Trailer can be adjusted in about 30 inch increments. At each length interval, there is an electrical socket that connects the trailer wire harness from the front section to the rear section of the trailer. This novel system eliminates the need for a troublesome cable reel or coil of wire. Down time and maintenance is thus reduced.



Length adjusting intervals.

Steel rollers with bronze bushings



Locking Pin

Locating Pin

Wire Harness Plug

The bronze bushing rollers are not the only feature that makes it easy to adjust the length of a CZ Pole Trailer. The small locator pin shown in this photo helps to line up the larger locking pin. Without this unique system, it is difficult for even two men to get the locking pin holes to line up.

Three simple steps make it easy to set our trailer to the optimum length for the pole being hauled.: 1) Loosen the jam plates and pull the plug and locking pin. 2) Extend the trailer a little longer than the desired length. 3) Place the locator pin at the desired setting and back up until it bottoms out. Replace the locking pin and plug, then tighten the jam plates. (Note: use of the jam plates is optional, but they will eliminate rattle.)